

The GOLDEN SPIKE



www.svlsrcm.org

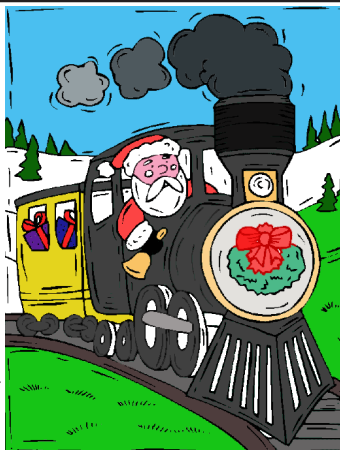
December 2019

Volume 46, Issue 12

Santa Train:

Dec. 7, 8 & 14, 15. Santa is indeed coming to town and we are going to need your help. We will be doing our Santa Train the *first two weekends* in December. We will need engineers, conductors, station helpers, village workers, baked goods and candy canes.

Here is my new plea for help..... Wow, this is the last newsletter of the year - and of the decade. We have our biggest fund-raiser of the year coming up.



Our Santa Train is a major event and we need lots of help. We will begin on Wednesday, December 4 at 9:30 AM when the tarps and scenic backdrop are set up. Thursday and Friday we set out all the decorations at the station, around the track, and most important, Santa's Village. We have numerous trees to decorate in Santa's Village as well as setting up tables, lights, garlands, and all things holiday. It takes a lot of people to accomplish all this in 3 days. We run our Santa Train from 11-3 on December 7, 8, 14 and 15. We start getting the trains out around 9 am. I start selling tickets at 10.

We will need lots of crew to handle running multiple trains all day. Even if you can't come out to help with setup or even running the event, we need cookies. Lots and lots of cookies, brownies, rice crispy treats, or any sweet treat. If we have 600 riders per day, that makes a minimum of 1,200 cookies eaten each day. We go through almost 5,000 cookies over the 4 days. Please help us by bringing out sweet treats - home baked is fantastic but we will happily take store-bought cookies. Please contact me with any questions or to let me know you where you plan to help. Not sure if anyone will mention this....We need a relief Santa for a few hours each day. This allows Dennis Bowie, our wonderful Santa, a break now and then. Let us know if you can help. Or this.....We need a photographer from 11-12 on Sunday, December 15.

Please let us know how you can help with this.

Alison Berry (916) 983-9712



President's Report

By Andy Berchielli



The last two years have gone by fast. I didn't intend to run again due to my time commitments with my other two jobs. I was hoping someone else would step up in my place. However hearing comments from those at the Narrow Gauge Meet and Fall Meet convinced me that this is the role I needed to fill for two more years. Realizing that I can't be at every event and work days doesn't change the commitment, I have to help lead the club. Your comments are much appreciated. Thanks for the re-elections.

November is usually a slow month for us before Santa Train. But not this year! The inner loop that has been talked about for years before I became a member is finally taking shape. A big thank you to Reno who helped make the right of way and helped build this one of a kind diamond. A 60' radius crossing another curved track is not an easy task. This inner loop will enable members and parties to run equipment without opening gates which had caused many issues this year. We need to build about 500' of track for this inner loop. So to make this task easier Richard, Peter and I built a new 20' track jig. This will make assembly faster. We intend to finish the inner loop along with other track replacements during January and February.

The leads us to Santa Train. If you didn't already know, this event funds the improvements we continue to make to the railroad. This event requires many positions including train crews, ticket sellers, making and staffing the cookies, photography processing, station help, line help and setup before hand. And everyone would like a break at some point. Calls have been made asking for help. Even just donating cookies is helping. Weather cooperating we provide well over 1000 riders in a weekend.

Happy Holiday



SVLSRM Calendar

Nov. 30 Rancho Cordova Christmas tree track setup
 Dec. 1 Rancho Cordova Christmas tree lighting.
 Dec. 2 Rancho Cordova Christmas tree track take down

Dec. 7-8 Santa Train.
 Dec. 9 Board Meeting 6:30 P.M.
 Rancho Cordova City Hall. Members welcome.
 Dec. 14-15 Santa Train.

Jan. 1, 2020 General Meeting & New Years Day Run
 - bring your train and let's run all day.
 General Meeting: 1:30 pm at the club.
 Vote on Bylaw Revisions.

Jan. Work weekends during January and February.
 Jan. 13 Board Meeting 6:30 P.M.
 Jan. 17 SVLSRM annual dinner 6:30 Rancho Cordova City Hall

Please volunteer to support the club events.
How will you support SVLSRM this month?

Rates have increased again and again.



Help us save money.

Save SVLSRM some money and read the news letters on-line.
 Tell Membership that you don't need the mailed copy; we will notify you by E-mail so you can read it on-line.



Please check the SVLSRM web site www.svlsrcm.org for current information. If you have not looked for a while, then you will have missed news or for sale items that are not in the newsletter.

The Sacramento Valley Live Steamers Railroad Museum, Inc. is organized and operated exclusively for public benefit charitable purposes within the meaning of Section 501 (C.) (3) of the Internal Revenue Code.

Donors may deduct contributions to The Sacramento Valley Live Steamers Railroad Museum, Inc. to the fullest extent allowed by law as provided in Section 170 of the Internal Revenue Code.

The Golden Spike is the published monthly by the Sacramento Valley Live Steamers Railroad Museum, Inc., P.O. Box 273, Rancho Cordova, CA 95741. The SVLSRM track is located in Hagan Community Park, Chase Drive, Rancho Cordova, CA. Articles & Pictures may be submitted to: editor@svlsrcm.org. **The news letter deadline is 24th of each month. Member articles wanted.**

MEMBERSHIP

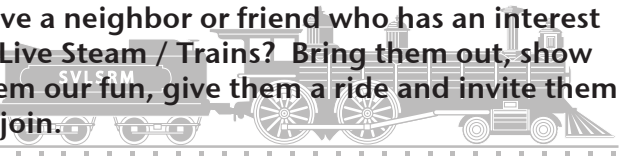
by Barbara Rohrs

DUES ARE DUE NOW PLEASE PAY BY JAN 1, 2020

Please complete a membership form noting changes. You can renew on-line or download form at svlsrcm.org then send check or pay on-line.

Send forms to SVLS P.O. Box 273, Rancho Cordova, CA 95741

Have a neighbor or friend who has an interest in Live Steam / Trains? Bring them out, show them our fun, give them a ride and invite them to join.



Board of Directors

(##) Ending year of term

President: Andy Berchelli (916) 752-6697 (19)

E-mail: president@svlsrcm.org

Vice President: Dennis Gramith (916) 988-7884 (20)

E-mail: vicepresident@svlsrcm.org

Secretary: Alex Wilde (530) 919-5026 (19)

E-mail: secretary@svlsrcm.org

Treasurer: Alison Berry (916) 983-9712 (20)

E-mail: treasurer@svlsrcm.org

Track Superintendent: Dennis Bowie (916) 337-9492 (20)

E-mail: tracksuper@svlsrcm.org

Yardmaster: Richard Lutrel (925) 876-0375 (20)

E-mail: yardmaster@svlsrcm.org

Trainmaster: Peter Welch (916) 838 4998 (19)

E-mail: trainmaster@svlsrcm.org

Director1: Bill Yoder (916) 652-7113 (20)

E-mail: director_bill@svlsrcm.org

Director2: Steve Milward (530) 559-2472 (19)

E-mail: director_steve@svlsrcm.org

Committee Chairpersons

Membership Chairperson: Barbara Rohrs (916) 730-1415

E-mail: membership@svlsrcm.org

Safety Chairperson: --- OPEN ---

E-mail:

Caboose Chairperson: Barbara Moser (916) 645-3425

E-mail: caboose@svlsrcm.org

Birthday & Company Event Chairperson:

Phone: (916) 572-7857 E-mail: Events@svlsrcm.org

Newsletter & Web Editor: Bill Yoder (916) 652-7113

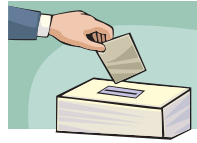
E-mail: editor@svlsrcm.org

Reminder - No phone calls after 8:59 PM



SVLSRM Helpers:

November Work Days - Helpers Tuesday, Saturday and Sunday The following people have been seen out at SVLS helping work on track, trains, picking up leaves and branches and other miscellaneous projects around the grounds. Paul Skidmore, Dennis Gramith, Gordon & Barbara Moser, Bill Yoder, Dennis Bowie, Harry Voss, Tom Nance, Glen Wilson, Steve Milward, Ian Milward, Phil & Stephanie Huntingdale, Richard Lutrel, Alison Berry, Reno Farinelli, Matt Thomas, Wyatt Thomas (Weisel), Abby Thomas, Gary Holmes, Andy Berchielli, Augie Berchielli, Veronica Taylor, Peter Welch.

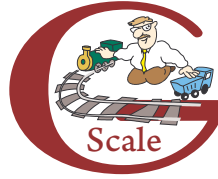


Election results November General meeting. President: Andy Berchielli, Secretary: Stephanie Huntingdale, Trainmaster: Peter Welch, Director at Large: Steve Milward.



TRACK UPDATE

Phil Huntingdale



Coming out to help with the Santa Train? Do you have a Christmas train that runs on battery or steam? Bring it out to run.

This is a special time and our club's largest fund raiser. We need cookies for the Santa Runs. It's also time to start thinking about our winter projects. The club has many projects that you can help with. You can't get on the ground and help with the 7.5 track projects? Come stand up and help with the Phase 2 G Scale build.

I recently ran one of my trains on a Tuesday, work day, and then went back to work. It is a blessing and a benefit of your membership that we have a track that is level, set-up and ready to enjoy any day of the year.

We have modified plans for the phase 2 part of the project. This will include continuation of two of the lines forming a double dog bone shape, with trestle and landscaping. When complete the main line track will be 230 foot of track. Time to start this build will be January 2020. Donations are still needed to get this phase completed. Please consider helping out, with dollar donations, material or as a volunteer helper.

Make donations specifically for the "G Scale Project" thru the club Treasurer, Alison Berry, address as listed for the Club. You can also do Paypal online on the website. <https://www.svlslrm.org>

Merry Christmas, hope to see you on New Year's Day for running trains and the pot luck.



Track panel building for the inside loop project.

I had trouble reading some names as they weren't printed clearly. Going to have to ask people to please just print I guess.



Director - Steve Milward



Hello everyone and happy Fall! We've gotten through another operating season and now it's time to relax. I'm just kidding, now we're getting busy! The weekend after Thanksgiving is the tree lighting in Rancho Cordova. No sooner than that is done, we jump into preparations for the Santa Trains. To boil it

down to its basic essence, we are in need of two things from our members, friends and families - lots of help, and lots of cookies!

We'll need help setting up beginning December 4th, plus lots of help the on the following two weekends. Then there's cookies! I had no idea how many cookies we serve over the course of two weekends, it's in the thousands! So, we're hoping that folks will jump in and help out. It's a lot of work, but it's hectic crazy fun at the same time! With that thought in mind, we'll probably be calling folks to see if they're willing to jump in and help out. If you can assist us, so much the better! After all that craziness subsides, we'll concentrate on track improvements for the next season. Rest assured, there's gonna be some really neat changes and improvements over the next few months. Heck, come on out and join in there too. That's all for now. Please think about how you might be able to help out, as we'd love to see you out there! Until then, hope to see you on the rails!



General Meeting November. Elections, Discussion on projects, and the upcoming events and need for volunteers.



10 Years ago: The holiday season is upon us once more, providing a perfect opportunity to reflect on where we have been during the past year and where we are going as a new decade begins.

We are participating again in the Rancho Cordova Christmas Tree Lighting event at Village Green Park in Rancho Cordova. We hope that our trains encircling a beautiful Christmas tree will become a lasting memory for a new generation of children, inspiring them to learn more about the wonderful world of steam locomotives. We will also help launch the important once-a-decade national nose count known as Census 2010 as we invited everybody to climb aboard and participate fully in this important civic milestone.

20 Years ago: Bike path changes: Recently the Sacramento Bee reported that improvements on the entire American River Bike Path would begin in 2000. they will be widening the path to 12 feet to accommodate bicyclists, walkers and in-line skaters. What this will mean to our club and its facility is unknown at the moment. We will keep abreast of the situation and make known any changes for us as a club.

As we end a century and begin anew, let us all ponder ones attitude, evaluate and adjust so that each of our attitudes makes the world a better, nicer place to be. May you and your family have a blessed Christmas and a prosperous New Year.

30 Years ago: Making STEAM - On Saturday, November 18, with the expert guidance of landscape architect, Mark Askew and his helper, Pancho, the following list of workers planted 30 acorns and 30 two-year-old valley Oaks. Those members who were there to help out were: Dick Esselbach, Coug Fulton, Gordon Moser, Keith Berry, Ken Willes, Warren Sharratt, Henry Stefani, Paul Moser, Amandus Drewes, Keith Kirstein, Warren Wagner, Howard Shrader, Coleman Buelman, Milon Thorley, and Dennis & Judy Gramith.

40 Years ago: No news from the park people about the proposed concrete block m/w storage building. Dick Quiring, ex-prex, agreed to continue spearheading the building campaign. There was considerable talk about going to an all-steel railroad car, less trucks.

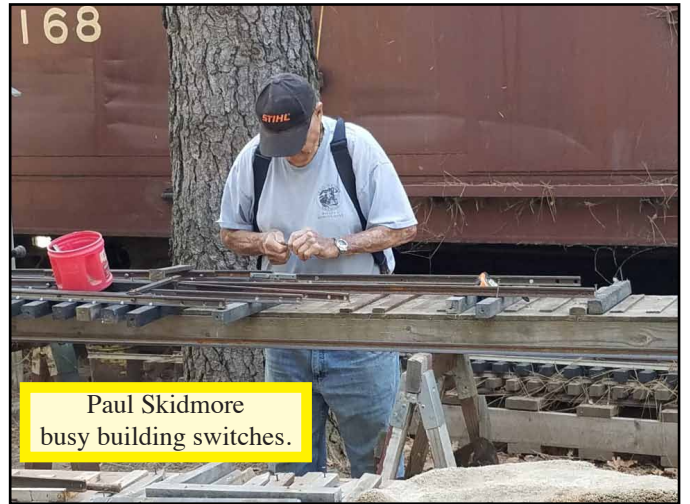
Kings of the road... that's my salute to the De Freitas boys, Warren Rose, Chuck Corothers and all the other stalwart heros who are beginning to make the necessary regular and continuous effort at routine track maintenance.

Al and Gerry dream of a run day under train orders... flimsies, corn-field meets and all that good old-fashioned stuff. Anyone interested? It would be nice for this effort if we could carve a wide enough shelf out for a passing track near the river end of the straightaway.

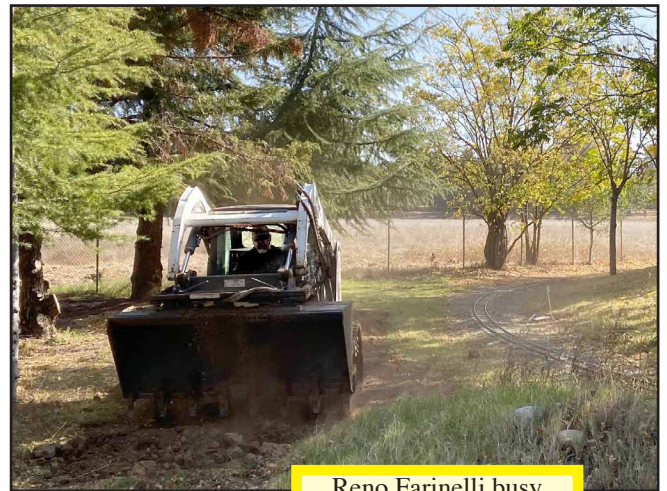
To all A Merry Christmas Highball.



Inspecting trestle repairing wood ties

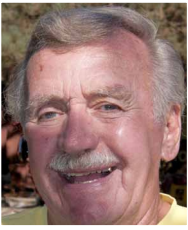


Paul Skidmore busy building switches.



Reno Farinelli busy making new loop path.





Vice President's Report

By Dennis Gramith

Attention all: those of you who may have cause to place your body mass upon the seats of engineer cars for the club diesel locomotives. The engineer car for the Union Pacific GP40 has had the

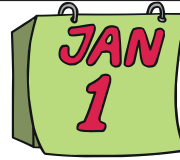
seats replaced/repairs. They now have a steel plate installed below the seat cushion to help support the original plastic frame material. PLEASE DO NOT lean back like you are sitting in a recliner.



They are boat seats, not Lazy Boy recliners.

The front engineers seat had to be replaced due to the mounting bolts being pulled out of the seat base by excessive pressure from leaning back in a reclining position.

There is progress on the new Pacific steam loco. Using details and formulas from an old Live Steam Magazine article, I have designed and constructed a firebox arch for the big loco. The angle brackets will be welded to the bottom of the tube sheet in the firebox, and the stainless steel arch will be easily removable by removing the two nuts on the front side. The arch should greatly improve the steaming ability and efficiency of the boiler. We are still awaiting the arrival of the new atomizing burner to convert it back to an oil burning locomotive.

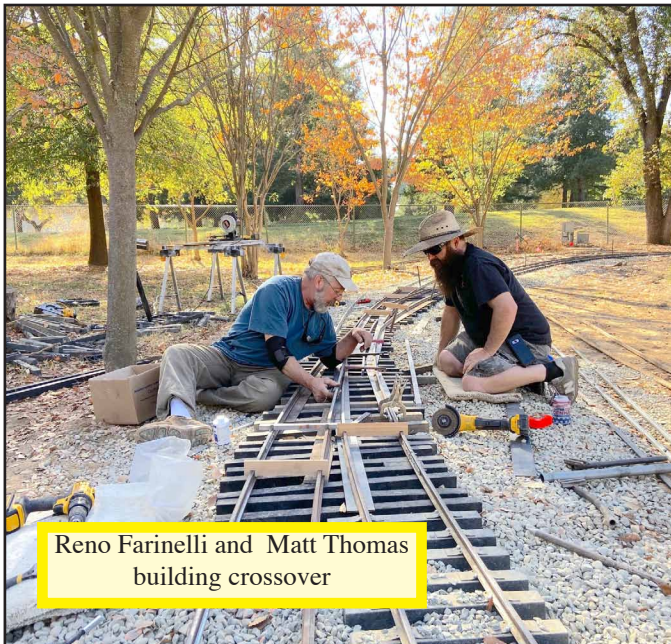


Members New Year Run Day.

Bring your train, your family, food and have a fun day at the track.



Work in progress, new loop, crossover setup, and finished welded crossover below.



Reno Farinelli and Matt Thomas building crossover





SAFETY RULES FOR THE MONTH

1.16 Fuel storage

All gasoline must be stored in the fuel cabinet by boxcar.

2.05 Safety Chains

A chain, cable or draw bar must be installed between any car on which the Engineer is

riding separate from his locomotive. A chain or draw bar must also be installed between any fuel car or cars and the locomotive which it supplies. Some safety device is recommended for all cars.

3.18 SVLSRM Owned Equipment

Any member wishing to use any SVLSRM owned rail equipment at the facility must make this request to the Trainmaster or appointee(Article IV, Section 11 of By-Laws). The member must report to the Trainmaster or appointee any damage or operational problems that occurred while in their care at the time of the equipment return. The member must return the equipment to the location from where it was issued.

4.04 Responsibilities of Stationmaster

The Stationmaster will have complete charge of the Station. The Stationmaster shall have a whistle (police type), red flag, and flashlight in their possession at all times while acting as a Stationmaster. They shall supervise the loading and unloading of all passengers at the passenger station. They shall discreetly refuse passage to passengers who obviously cannot fit or sit safely on a passenger hauling car. They shall make certain that all passengers have been advised and understand the safety instructions before the train leaves the station. They shall work in close cooperation with other operating personnel to keep passenger-hauling trains moving without causing congestion on the mainline.

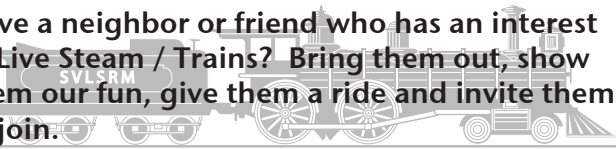
Qualifications/Restrictions of an SVLSRM Stationmaster

- 18 years of age or older
- Member of SVLSRM in good standing
- Passes a current Written Qualification test showing knowledge to supervise passenger, scale railroad equipment and the requirements of a StationMaster
- Passes a current Practical examine demonstrating the judgment and ability to competently and safely supervise passengers, scale railroad equipment and requirements of a StationMaster



There are plenty of projects to work on at the railroad so you need to come out and give time to your organization.

Have a neighbor or friend who has an interest in Live Steam / Trains? Bring them out, show them our fun, give them a ride and invite them to join.



FOR SALE

OPPORTUNITY FOR YOU:

How would you like to have your very own house and shop near the World's Largest Hobby Railroad? Think out of the box! A four BR, 2 Bath good house - approximately 2120 square feet. A big insulated shop for trains, etc. On 10.27 acres. Updated cabinets in kitchen, laminate flooring in much of the house. Detached two car garage. Landscaping. Space for RV and hook up. 109 Rainbow Park Dr., Chiloquin, OR Asking: \$299,000

Easy access to HWY 97. Directions:

North on Hwy 97. Turn east on Rainbow Park Dr., first driveway to left.

This could also be used as a Time-Share and be owned by three or four club members. A great place for members, children, grandchildren and train work, storage, etc.

Call S. Rickman at (541) 783-3798 or Frank Bartholomew (209) 966-4322.

**Grizzly
3HP 230V.
TableSaw.
\$400**

**Needs a
fence.**



Check our web site FOR SALE page for pictures and more details. <https://www.svlstrm.org/>



Got Something for Sale?

Send to Editor@svlstrm.org

**DUES ARE DUE NOW
PLEASE PAY BY JAN 1, 2020**