

# The GOLDEN SPIKE



www.svlsrcm.org

May 2021

Volume 48, Issue 5



## President's Report

By Andy Berchielli

As you read this Spring Meet Registration is available on our website. Register for RV spots; steaming bays and track assignments. If you can't do the internet please call Bill Yoder at 9166527113.

This year's Spring Meet we will not be serving breakfast and no catered dinner for Saturday night. Instead we will be serving pizza for Saturday dinner. Price for meals have gone up but will include a drink. We will also have a small charge for RVs. RVs and meals can be prepaid during registration. There will also be a tent setup for merchandise and drinks. Currently AccuCraft is the only vendor.

The club has received some great donations this year. Last month was the 1" scale cab forward. This month we also got a diorama of the City of San Francisco snowbound 1952. It's 11' long and displayed in the SP Caboose library.

It came from the estate of Bill Eversul, The same place the cab forward was acquired.

Another donation received this month was a railroad supply GP38 in Santa Fe colors. It was donated by the Brooke Gomez, the granddaughter of David Quaschnick David lived in the Loomis area and ran a track around his property. This engine is in better shape than our current UP engine. Also with this donation were several hundred feet of track. Ya New Yard ideas!! We are officially out of storage space. So with this acquisition the club has decided to part ways with the UP. See sales ad.

Birthday season is picking up. Contact me if you wish to help with parties.

## Yardmaster Report

By Richard Lutrel

1st off I would like to thank everyone who continues to help with yard-work at OUR club! It is a never ending task. I don't have everyone's name but THANK YOU!



Second I would like to ask that everyone STOP driving on the grass except the RV area. The grass is worn and now looks like road all the way to the G scale track. It is not much further to park in the RV area and carry your stuff over. If it is, ask for help. NOT just the G scale people EVERYONE. Please let's give the grass more time to grow back. I can understand once in awhile when you have something heavy to unload into the container or boxcar but every single week is too much.



The following SVLS members were seen helping out at SVLS on , the following days. Saturday, 3-13, 3-27, 4-3-, 4-17: Harry Voss, Leonard Cassier, Gordon Dunham, Gordon & Barbara Moser, Alan Shifley, Dennis Bowie, Glen Wilson, Craig Griffin, Hao Chen, Alison Berry, Greg

Siano, Butch Floyd, Dennis Gramith, Phil & Stephanie Huntingdale, Tom Nance, Kevin & Andrew Sach, James Fock, Larry & Terri Curtin, Mark Cundiff, Chris Klevesahl, Keith & Gloria Berry, Steve Milward, David Arrol.

Tuesday, 3-23, 3-30, 4-6, 4-13, 4-20: Leonard Cassier, Gordon & Barbara Moser, Harry Voss, Dennis Gramith, Keith Berry , Richard Lutrel, Phil & Stephanie Huntingdale, Steve Milward, David Arrol, Alan Shifley, Larry Curtin , Butch & Bill Floyd, Alison Berry.

April Public Run Day Helpers & Visitors , 4-3, 4-4: Alan Shifley, Gordon & Barbara Moser, Glen Wilson, Harry Voss, Chris Klevesahl, Phil & Stephanie Huntingdale, Dennis Gramith, Richard, Amy, Sarah, Brianna Lutrel, Craig Griffin, Todd Bishop, Larry Curtin , Dean Sheets, Alison Berry, Leonard Cassier, Steve, Ian, Anna, Ethan Milward, Chris, Paul, & Eli Donhost, Lewie & Becky Donhost, Dennis Bowie, John & Jackie Bailie, Tom & Marie, Alys & Thomas Turner (Bailie), Nathan Bailie, Hannah, Isabelle, Lizzie Schierling, Chris Duncan, Wolfgang, Ed Zeis, Bill & Butch Floyd, Robert Forren, Gordon Dunham -G2, Andy Berchielli, Chris Smith, Bob & Mary Dean, Colton Snell, Austin Unruh.

G-Gage Members , Tuesdays: Steve Tompkins - visitor, Dave & Juaniti Frediani, Jim Hearn, Colton Snell, Ralph Merrill, Mike Epstein, Steve Arigotti, Earl Martin, Michael Fitzgerald, Barbara Schoellkopf, Nancy Norris - visitor, Gordon Dunham, Phil & Stephanie Huntingdale, Bill & Butch Floyd , Phillip Evans, Rich Nelson, Michael & Barbara, Bart Cook, George Blount.

Register for our Spring Meet on-line. Reserve Train space, RV space and Reserve Saturday dinner by May 10<sup>th</sup>. Please pay online for meals and RV/ Camper spots using PayPal. - THANKS

Remember this CLUB is YOURS please help to maintain the track and grounds if you can find time to play, I am sure you can find time to help with a task.

**SVLSRM Calendar**

Club future activity will depend on VIRUS GUIDELINES. *Please check on-line about Public activity.*

- May 1 Public run day - **check on-line**
- May 2 Public run day - **check on-line**
- May 10 Board Meeting at 6:30 PM Via Zoom
- May 14 Spring Meet.
- May 15 Spring Meet.
- May 16 Spring Meet.

**Register ON-LINE**

- Jun. 5 Public run day - **check on-line**
- Jun. 6 Public run day - **check on-line**
- Jun. 14 Board Meeting at 6:30 PM Via Zoom
- Jun. 19 Work day.
- Jun. 20 Member RUN day.

Please volunteer to support the club events.  
How will you support SVLSRM this month?



**Help us save money by not mailing your newsletters. Read it on-line.**

Save SVLSRM some money and read the news letters on-line. Tell Membership that you don't need the mailed copy; we will notify you by E-mail so you can read it on-line.



See [www.svlsrcm.org](http://www.svlsrcm.org) for current information. If you have not looked for a while, then you will have missed news or for sale items that are not in the newsletter.

The Sacramento Valley Live Steamers Railroad Museum, Inc. is organized and operated exclusively for public benefit charitable purposes within the meaning of Section 501 (C.) (3) of the Internal Revenue Code.

Donors may deduct contributions to The Sacramento Valley Live Steamers Railroad Museum, Inc. to the fullest extent allowed by law as provided in Section 170 of the Internal Revenue Code.

*The Golden Spike* is the published monthly by the Sacramento Valley Live Steamers Railroad Museum, Inc., P.O. Box 273, Rancho Cordova, CA 95741. The SVLSRM track is located in Hagan Community Park, Chase Drive, Rancho Cordova, CA.

Articles & Pictures may be submitted to: [editor@svlsrcm.org](mailto:editor@svlsrcm.org).

**The news letter deadline is 24th of each month. Member articles wanted.**

**MEMBERSHIP**

*by Stacy Reese*

I would like to welcome all of our new members to our fabulous club! I hope to see everyone at the Spring Meet for a great weekend filled with lots of fun. Thank you to everyone who has paid their dues.

We still have a few that need to pay and hopefully by the meet we will have everyone paid. Stephanie and I have got the Roster cleaned up and hopefully correct. If you spot any errors, please let me know.

I would also like to remind everyone that the Train Crews must update their testing every two years. Tests will be available at the meet.

If you have any question about membership just shoot me an email or give me a call, all my contact information is on the website. See you at the meet!

**Board of Directors**

(##) *Ending year of term*

- President: Andy Berchelli (916) 752-6697 (21)  
E-mail: [president@svlsrcm.org](mailto:president@svlsrcm.org)
- Vice President: Dennis Gramith (916) 988-7884 (22)  
E-mail: [vicepresident@svlsrcm.org](mailto:vicepresident@svlsrcm.org)
- Secretary: Stephanie Huntingdale (916) 580-7377 (21)  
E-mail: [secretary@svlsrcm.org](mailto:secretary@svlsrcm.org)
- Treasurer: Tom Nance, (714) 795-4630 (22)  
E-mail: [treasurer@svlsrcm.org](mailto:treasurer@svlsrcm.org)
- Track Superintendent: Dennis Bowie (916) 337-9492 (22)  
E-mail: [tracksuper@svlsrcm.org](mailto:tracksuper@svlsrcm.org)
- Yardmaster: Richard Lutrel (925) 876-0375 (22)  
E-mail: [yardmaster@svlsrcm.org](mailto:yardmaster@svlsrcm.org)
- Trainmaster: Peter Welch (916) 838 4998 (21)  
E-mail: [trainmaster@svlsrcm.org](mailto:trainmaster@svlsrcm.org)
- Director1: Craig Griffin (916) 365-1917 (22)  
E-mail: [director\\_craig@svlsrcm.org](mailto:director_craig@svlsrcm.org)
- Director2: Steve Milward (530) 559-2472 (21)  
E-mail: [director\\_steve@svlsrcm.org](mailto:director_steve@svlsrcm.org)

**Committee Chairpersons**

- Membership Chairperson: Stacy Reese (916) 960-6850  
E-mail: [membership@svlsrcm.org](mailto:membership@svlsrcm.org)
- Librarian Chairperson: Alison Berry (916) 956-4597  
E-mail: [librarian@svlsrcm.org](mailto:librarian@svlsrcm.org)
- Caboose Chairperson: Barbara Moser (916) 645-3425  
E-mail: [caboose@svlsrcm.org](mailto:caboose@svlsrcm.org)
- Birthday & Company Events Chairperson:  
Phone: (916) 572-7857 E-mail: [Events@svlsrcm.org](mailto:Events@svlsrcm.org)
- Newsletter & Web Editor: Bill Yoder (916) 652-7113  
E-mail: [editor@svlsrcm.org](mailto:editor@svlsrcm.org)
- Safety Chairperson: --- OPEN ---

**Reminder - No phone calls after 8:59 PM**



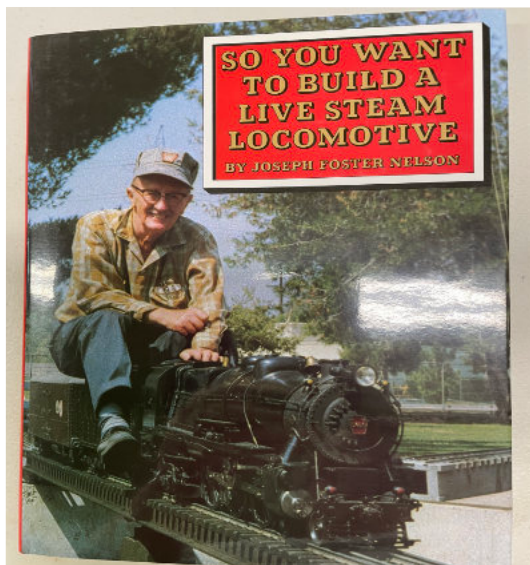
**Librarian - Alison Berry**

Report from the Library Caboose:  
I have begun shelving the books by the Dewey Decimal Classification system and hope to have this done prior to the Spring Meet. I will have the library open during the meet so people can come and see what we have in the library.

I really need help in organizing the magazines. We have magazine file holders so the magazines can be sorted by publication and date. We will have some magazines in the library such as Live Steam. Magazines we will not be keeping and will be put out at the meet for members to take what they want. We are not able to keep VHS or DVDs in the caboose because of the temperature extremes so any that have been donated will also be put out at the meet for our members to take.

The book of the month for May is "So You Want to Build a Live Steam Locomotive" by Joseph Foster Nelson. In 1996, the fledgling LIVE STEAM magazine began a series of articles entitled "So You Want to Build a Live Steam Locomotive" by Joseph F. Nelson. Originally planned for the club bulletin of the Los Angeles Live Steamers, the comprehensive treatise became a regular feature of LIVE STEAM magazine extending over a six-year period. These articles are the basis for this book.

I am working in the library most Tuesdays and Saturdays. Contact me if you can help me organize the magazines or help with other library projects at: [librarian@svlsrm.org](mailto:librarian@svlsrm.org)



**Treasurer**

*Tom Nance*



Spring is here, and in a few short weeks, the club will be hosting this year's Spring Meet. While there will be a few details that make this meet a little different from year's past, I think everyone can agree that we are looking forward to being out and operating our equipment as well as showcasing what projects have been in the works for the past year. We strongly encourage everyone to register on the club's website, make your reservations, and review what will be offered at this year's meet.

The organization is always looking to improve what we can offer to its visitors. Sometimes, these improvements aren't always "train" related, but they still take planning and financing to see that it gets done properly. So that we can continue to improve the property and the amenities that can be offered, we will be charging a flat rate of \$20 to RVs for the meet weekend.

When registering, please note that this year, the club will not be offering breakfast. A \$40 meal ticket can be purchased during online and in-person registration which will include Friday's lunch, Friday's Dinner, Saturday's lunch, Saturday's dinner, and Sunday's lunch.

Thanks to Stephanie Huntingdale, the club has some new shirts, hats, and other pieces of Merchandise that will be available for sale. We will also be offering a silent auction rather than our normal raffle.

This is always an exciting time of year that many look forward to, and especially this year, safety is a concern that is on the mind of many. There is no shortage of tasks to do, and work that needs to be done for everyone to be able to enjoy themselves. Please take the time to see how you can help! Between setting up, registration, serving meals, cleaning up, and taking down, if you see something that needs to be done, please do so.





TRACK UPDATE

By Phil Huntingdale

For the railroad fans in the club, that's all of us, the Spring Meet is from Thursday, May 14 thru Sunday, May 16. This will be the time to come out

and share the hobby in person, visit with old and new members in the club. Andy, the President and the Board are planning an event we have been waiting for over a year. Lunches and dinners will be available. Friday dinner is spaghetti, Saturday is pizza, and lunches Saturday and Sunday are burgers or hot dogs, Friday will be a sack lunch, and each meal includes all the fixings. Pre arrangements will be the order of the day. For those sticking around in the evenings, the G Gauge layout will have light strands glowing for evening runs. Should be a great club weekend meet.

Reminder, during meets, you are not permitted to park inside the fenced area. You may drive in, off load and load out, but your vehicles must be parked outside the fenced area. This is because there are many people in attendance; RV's and tents within the park. Meet weekends we must adhere to the Board's request.

I expect to see all the steaming bays filled and many consists on the sidings on the 7 1/2 inch gauge. We will be able to park our smaller equipment on the sidings on the G layout, however, please consider others should they be wishing to stage their equipment also on the various sidings.

Don't forget the first weekends of the each month are the public run events, hours 11:00 to 3:00. This is a great opportunity as well to run on the layout without other equipment on the track, and a great way to encourage young folks to get into the hobby. A couple of members have had some locomotives out, however it has been slim. I have been running one of my battery powered trains to fill the track. With the great weather, bring out your significant other and folding chairs and relax under the shade of the canopy trees.

See you about!



SAFETY RULES FOR THE MONTH

2.12 Boiler Inspection

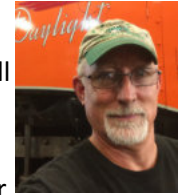
All steam boilers operated at the SVLSRM facility shall carry a current boiler inspection tag, or card. This tag or card shall state the hydrostatic test pressure, the maximum operating

pressure and the safety valve settings. The SVLSRM will accept valid current boiler inspection tag or card issued by recognized Live Steam Clubs for operation of steam locomotives and equipment on the SVLSRM facilities.

3.04 Unloading/loading

Locomotives and equipment shall be unloaded and loaded only at the facilities provided at the steaming bays. All vehicles shall be removed from the loading area as soon as

Director - Steve Milward



Greetings. As always I hope this finds all are in good health.

I became a member of SVLS just under ten years ago after visiting one summer afternoon. The trains were running, and I was peppering a fellow named Kevin with questions about locomotive 1973. After some amount of discussion, he asked if I'd like to try running it. Oh heck yes! So, under his supervision, I ran the 1973 around the entire railroad! To say I was hooked would be understatement! I joined that same afternoon.

After that, I looked to see where I might be able to be most useful. I found track work to be enjoyable and always needed. Over the years I've continue to learn the job and try to be there to help

One of the things that I most enjoy about my membership in this organization is the willingness of fellow members to share their time and expertise with others. I've been fortunate in that since joining, I've been able to acquire a couple of locomotives and some rolling stock. Now I freely admit that I'm not a machinist, nor do I possess any particular skill set beyond basic mechanical aptitude and a willingness to learn. That said, folks like Kevin Sach, John Bailee, Don Yungling and Dennis Gramith have been amazingly generous with their words of encouragement, advice, and hands-on assistance in helping get my steam locomotive (Yreka Western 19) up and operational. John, in particular spent hours of own time fabricating and machining parts for my locomotive. Other members have offered advice and direction on my many (too many?) ongoing projects.

To all of these folks I am most grateful for the time that they've been willing spend assisting me or just answering my endless questions. It is my hope that I too, might be able to help other members with some of their tasks or projects. Thank you to all!

Hoping we'll see you at the Spring Meet.



possible after loading and unloading. Small equipment may be unloaded/loaded at any siding.

4.02 Requirement of Conductor

All trains hauling passengers shall have at least one qualified Conductor on the last car of the train, or facing backward on the rear seat of the Engineer car. It shall be their responsibility to protect the rear of the train and to assist the Engineer in the operation of the train. Each Conductor on duty shall have a whistle (police type) and a red flag or light on the train.

For our 2021 Spring Meet we will be having a Silent Auction in place of raffles. Two items:



Tucker Smith, The Challenger – Those who love steam engines are no doubt familiar with the Challenger, the fastest freight locomotive of the Union Pacific fleet in the 1940s and 1950s. Artist Tucker Smith set the painting at the top of Sherman Hill between Cheyenne and Laramie, Wyoming, at an elevation of about 8000 feet. In the background are the Rocky Mountains of Colorado. At the left of the painting, the yellow scheme the Union Pacific used for its passenger cars during the 1950s can be seen. “There’s something almost alive about a steam engine. It breathes steam and you can watch all the moving parts on the outside of the engine—even the steam pipes, valves and pumps. That’s what is magical to me about a steam engine. It seems to have a life all its own. As I was working on it,” Smith says, “I was thinking ‘speed’ and ‘movement.’ I wasn’t trying to think of it as a photograph. I was trying to put myself there. I was wondering how it would feel if you actually stood there as the train went by. That was more important to me than getting every detail. You can see every nut and bolt only when the locomotive is motionless, not when it’s racing by you.” Signed and numbered limited edition print. 1266 of 1300, framed. Value: \$800. Bidding starts at \$300, Buy It Now price, \$500. Must take delivery at the Meet or arrange for pick-up.

Ted Benson, The Sierra Railroad. “The following four photographs have been selected from several hundred for their technical qualities and variety of expression. They are among the best, but certainly not the last, of the photographer’s impressions of the Sierra Railroad in steam.” Quote from famed photojournalist, Ted Benson who specializes in black and white photography. This portfolio, number 132 of 500, compiled and signed by Ted Benson in 1981. Bidding starts at \$100. Buy it now price, \$200. Must take delivery at the meet or arrange for pick-up.

**SEE enlarged Plate1 photo on next page.**

Not able to attend the meet, You can submit a bid or purchase the items at the Buy It Now price by emailing [Secretary@svlsmr.org](mailto:Secretary@svlsmr.org)

Plate 1  
Twilight at Jamestown, December, 1976.

Just after sunset on a crisp winter's eve, five synchronized flashbulbs catch locomotive 28 passing Jamestown's famous water tank, coming home from a trip to Cooperstown. A long infatuation with railroading after dark led to the construction of a crude multiple flash system in the fall of 1976. This photograph resulted from the system's first stop-action application.

Plate 2  
Number Three, Blackbirds and Cattle, November, 1975.

Sierra's best-known and most photographed locomotive is this vintage 1891 Rogers Ten-Wheeler, an engine that helped build the railroad in 1897 and survived to become a legend in film and television production work. Here the "Three-spot" and observation-lounge car 2001 recall Sierra's first post-dieselization excursions of the late 1950's as they provide a very private outing for company president Charles Crocker. Blackbirds and cattle in a field near Chinese react with alarm, even though the sounds of a steam train are nothing out of the ordinary.

Plate 3  
Joe Francis on the Prairie, September, 1971.

Labor Day, 1971, was another day's work for veteran engineer Joe Francis, seen in charge of locomotive 34 on an excursion that featured the first steam train into Oakdale in eight years. While photographing the contemporary world of steam railroading it has been a foremost effort to find images indiscernible from the years when steam locomotion was a way of life. This view of Francis, eastbound near Paulselt, is one of the first to accomplish that goal.

Plate 4  
The Climb to Quinn, December, 1976.

Barking into the backlight of a hazy winter afternoon, locomotive 28 takes a three-car excursion up the short, steep grade to Quinn Spur, one mile west of Chinese. The image is that of the Sierra fifty years previous, yet subtle differences in equipment clearly label this train as one belonging to the "good old days" of the 1970's. It is an image defining the magic of the Sierra Railroad in steam, a touchstone with yesterday, and an inspiration for tomorrow.

Ted Benson, The Sierra Railroad. Plate 1 photo



1 of 4 photos in the portfolio, by Ted Benson

With help from Richard Lutrel, Steve Milward, Craig Griffen, Phil Huntingdale and myself we spent Sunday April 18 picking up the Santa Fe engine and pulling up track from David Quaschnick's property. When we arrived at the park Peter Welch, Dennis Bowie and Vic were there to help unload everything.

We spent the rest of the day cleaning the engine and changing fluids and gas lines. By the end of the day we had it running after 14 years in storage. Not bad for a days work.



**Secretary Board Report**

*By Stephanie Huntingdale*

The Board meets by ZOOM. Members are always encouraged to attend. The next meeting is May 10, 6:30 p.m. If you would like to attend, contact Andy Berchielli, (916) 752-6697, for how to connect to ZOOM or Stephanie Huntingdale (916) 580-7377 for an Agenda.

Public Run on April 3 & 4. 477 attended.

Stacy Reese donated an updated database for Membership recording. Membership dues reminders were sent out. 23 responded, 21 will be contacted for payment.

2021 Insurance was approved and the new policy was paid. \$6,452.75

Spring Meet Planning; see this newsletter for registration details.

Memorial names to be added before Spring Meet.

GP38 donated to the club. Plan to replace UP which has been unreliable for several years.

Key List Updated.

Legacy Plan brought back for updating. Review of passcodes and safe deposit box contents. Club historical document preservation.



**10 Years ago:** The track crew and volunteers have been able to make great progress on this year's track replacement project. As of press time, all track is on the ground except Memorial Grove. We have started to ballast, level and tamp which shows that there is light at the end of the tunnel. Ben Klienwacher got the tractor up and running and ballasting will be easier for the crew. Paul Skidmore has been leading the crew building switches for the new Midway North Yard. The new plan includes 4 sidings with an escape track for operations.



Paul Skidmore, Leonard Houpt, Sid Madden, Jack Friedman building switch for North Midway Yard.



**Trainmaster**

*By Peter Welch*



Since I became the Trainmaster I have had a drive to become a machinist. I now run my own machine shop complete with CNC and manual machines I offer quality machining and good prices. So if you need any

machining done give me a call.

I got the new clubs donated GP38 running after it had been sitting for 14 years. Still working a few of the bugs out but it is a nice engine with some cool features.

The 2021 Spring meet is right around the corner. If you are in need of a boiler test please get in contact with me before the meet and set up a time thank you. Peter 916 838 4998. Thanks.

**20 Years ago:** VP report by Dale Fowlar Here we are with the last "SPIKE" before the Spring Meet. The place is looking real snazzy, especially with a new paint job on the mower shed and roundhouse. Don Juergenson put out the word that he intended to take on the job and Lee Frechette was able to arrange for the loan of not just a pressure washer, but a "steam" pressure washer from Nations Rentals in Rancho Cordova. He and Don spent Sunday run day giving the two buildings a good hosing. Several others helped move all the material that was stored around the place. Don followed up a few days later with a very nice looking spray paint job.

**40 Years ago:** (1981) Vandals struck the week before the museum opened, tearing up 1) half the track from the Boulder Creek grade crossing to the lead switch on the old passenger siding and 2) half the track on the old siding itself. Damaged track 1) - repaired. Damaged track 2) - removed.

A number of out-of-town LS brethren took advantage of trackside living offered by SVLS during the museum opening. Meanwhile exciting things have been happening down at the park. Such as the usual derailments - under-privileged (?) kids without a penny for the engines to squash. Such as fires set by a beloved steamer who shall remain nameless and who, in poetic justice, was almost burned alive then almost drowned trying to extinguish the blaze. Such as John Grants electric, complete with pantograph and dynamic braking. Such as the DeFreitas duo who turned up like a couple of silver pennies to play host to guests during the week. Such as the \$50 collected for rides the weekend of 2-3 May.



**There are plenty of projects to work on at the railroad so you need to come out and give time to your organization.**

FOR SALE



*Santa Fe* California Poppy railroad China from California State Railroad Museum. 40 pieces total. 8 place settings. Brand new. \$500 or best offer.

Doug Boudakian 559-392-4246

dboudrrtrain@sbcglobal.net



The RGS Story (Rio Grande Southern) Complete set Vols I-XII \$1500.

Full Size Railroad Crossing lights & bracket (2 light) \$275.

Full Size single Crossing light \$100.

Full size Adlake Switch Stand light \$175.

Full size Railroad Adlake switch light has only one lens \$100.

Adlake Lantern , one lens missing \$350.

Turntable for Model - dual track 7.25 & 7.5 gauge \$150.

Various Boxcar/Caboose grab irons - Make offer

Contact Jeri Juergenson at 530 269-0443 (leave a message)

The club is parting ways with the UP GP38 Railroad Supply engine. We are selling it as is. Engine only. No riding car. Currently it is not running. The electrical wiring will need to be redone. We have a wiring schematic that goes with it. Also the carburetor will need to be replaced. The trucks have been rebuilt last year including new bearings. Priced at \$5000. Contact Andy Berchielli at [916-752-6697](tel:916-752-6697)

