

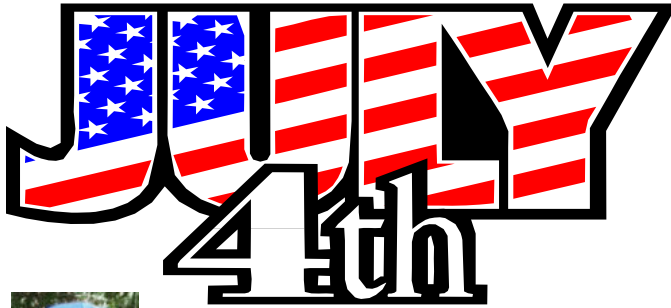
The GOLDEN SPIKE



www.svlsrcm.org

July 2021

Volume 48, Issue 7



President's Report

By Andy Berchielli

Rancho Cordova will be hosting the Fourth of July event at Hagan Park this year. There are still a few restrictions.

First gates open at 6pm. All attendees (visitors) will have to purchase tickets in advance online from their web site. Go to:

www.ranhocordovajuly4th.com

There will not be a carnival this year. The 3rd and 4th of July is the first weekend. We will run trains from 6 to 8:30 PM. This will allow us to finish up the last train ride before it gets too dark. Since we are the only ride attraction, we plan to be busy. All public trains will be operating. **Extra crews are always needed** for these big events. Firework show starts at 9:45pm and should be a sight to see! See you there!

All members are welcomed to come enjoy the day with us. Starting at 4 PM, the club will have our BBQ out. Bring your own meat to cook and a side dish to share. Our dinner picnic should be over by 5 PM so that we have time to set the trains up and get them up to the station.

SVLSRM has parking passes for members to get in from the Ambassador gate and wrist bands for the park. Both are in the caboose. If you are planning on coming, the caboose will be open on Tuesday, June 29th so that you can pick up your parking pass. If unable to pick up your parking pass, or for further information please contact:

Stephanie Huntingdale (916)580-7377,
or Dennis Gramith (916)988-7884.

Remember, SVLSRM members are to enter through Ambassador gate only.



June 2021. Work day helpers, Public run day helpers, and friends seen at SVLS:

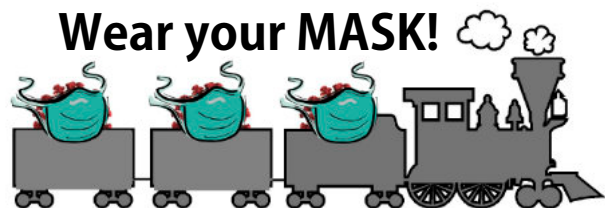
Alison Berry, Andy Berchielli, Augie Berchielli, Barbara Moser, Barbara Schoellkopf, Bart Cook, Bill Floyd, Bruce Runner, Butch Floyd, Chris Donhost, Chris Klevesahl, Colton Snell, Craig Griffin, Dave Frediani, Dennis Gramith, Don Yungling, Dwight Ridge, Earl Martin, Eli Donhost, George Blount, Glen Wilson, Gordon Dunham, Gordon Moser, Harry Voss, Judy Berchielli, Keith Berry, Larry Curtin, Leonard Cassieri, Michael Fitzgerald, Paul Donhost, Phil Huntingdale, Ralph Merrill, Rich Nelson, Richard Lutrel, Robert Forren, Stephanie Huntingdale, Steve Milward, Todd Bishop, Tom Nance, & Toy Yungling.



Please stay safe and follow State guidelines to do your part in preventing the spread of this Covid-19 virus.

Not Vaccinated then

Wear your MASK!



SVLSRM Calendar

Club future activity will depend on VIRUS GUIDELINES. *Please check on-line about Public activity.*

- July 3 6PM-8:30PM - **check on-line**
- July 4 6PM-8:30PM - **check on-line**
- July 12 Board Meeting at 6:30 PM Via Zoom
- July 17 Work day.
- July 18 Member RUN day.

- Aug. 7 Public run day - **check on-line**
- Aug. 8 Public run day - **check on-line**
- Aug. 9 Board Meeting at 6:30 PM Via Zoom
- Aug. 21 **HOT** August Night Run Please bring your train and enjoy the day and evening.

Please volunteer to support the club events.
How will you support SVLSRM this month?



Help save money by receiving your newsletters on-line.

Save SVLSRM some money and read the news letters on-line. Tell Membership that you don't need the mailed copy; we will notify you by E-mail so you can read it on-line.



See www.svlsrcm.org for current information. If you have not looked for a while, then you will have missed news or for sale items that are not in the newsletter.

The Sacramento Valley Live Steamers Railroad Museum, Inc. is organized and operated exclusively for public benefit charitable purposes within the meaning of Section 501 (C.) (3) of the Internal Revenue Code.

Donors may deduct contributions to The Sacramento Valley Live Steamers Railroad Museum, Inc. to the fullest extent allowed by law as provided in Section 170 of the Internal Revenue Code.

The Golden Spike is published monthly by the Sacramento Valley Live Steamers Railroad Museum, Inc., P.O. Box 273, Rancho Cordova, CA 95741. The SVLSRM track is located in Hagan Community Park, Chase Drive, Rancho Cordova, CA.

Articles & Pictures may be submitted to: editor@svlsrcm.org.

The news letter deadline is 24th of each month. Member articles wanted.



There are plenty of projects to work on at the railroad so you need to come out and give time to your organization.



Board of Directors

- (##) *Ending year of term*
- President: Andy Berchielli (916) 752-6697 (21)
E-mail: president@svlsrcm.org
 - Vice President: Dennis Gramith (916) 988-7884 (22)
E-mail: vicepresident@svlsrcm.org
 - Secretary: Stephanie Huntingdale (916) 580-7377 (21)
E-mail: secretary@svlsrcm.org
 - Treasurer: Tom Nance, (714) 795-4630 (22)
E-mail: treasurer@svlsrcm.org
 - Track Superintendent: Dennis Bowie (916) 337-9492 (22)
E-mail: tracksuper@svlsrcm.org
 - Yardmaster: Richard Lutrel (925) 876-0375 (22)
E-mail: yardmaster@svlsrcm.org
 - Trainmaster: Peter Welch (916) 838 4998 (21)
E-mail: trainmaster@svlsrcm.org
 - Director1: Craig Griffin (916) 365-1917 (22)
E-mail: director_craig@svlsrcm.org
 - Director2: Steve Milward (530) 559-2472 (21)
E-mail: director_steve@svlsrcm.org

Committee Chairpersons

- Membership Chairperson: Stacy Reese (916) 960-6850
E-mail: membership@svlsrcm.org
- Librarian Chairperson: Alison Berry (916) 956-4597
E-mail: librarian@svlsrcm.org
- Caboose Chairperson: Barbara Moser (916) 645-3425
E-mail: caboose@svlsrcm.org
- Birthday & Company Events Chairperson:
Phone: (916) 572-7857 E-mail: Events@svlsrcm.org
- Newsletter & Web Editor: Bill Yoder (916) 652-7113
E-mail: editor@svlsrcm.org
- Safety Chairperson: --- OPEN ---

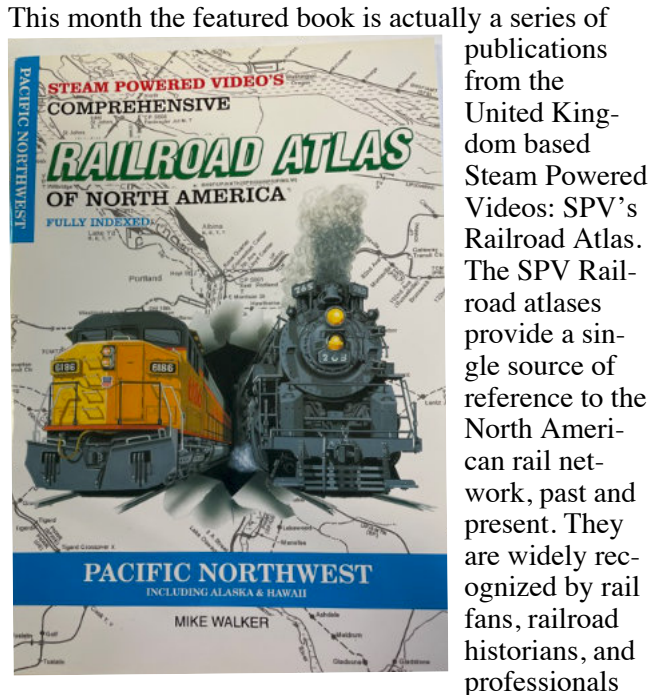
Reminder - No phone calls after 8:59 PM



Librarian - Alison Berry

I enjoyed having many visitors in the library during the Spring Meet. I am usually working in the library most Tuesday and many Saturdays. Now that it is getting hotter, it is too hot to work past 1 PM

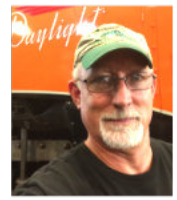
most days. Visitors are always welcome!



This month the featured book is actually a series of publications from the United Kingdom based Steam Powered Videos: SPV's Railroad Atlas. The SPV Railroad atlases provide a single source of reference to the North American rail network, past and present. They are widely recognized by rail fans, railroad historians, and professionals as the industry standard. Each sheet is drawn to a constant scale of 8 miles to 1 inch for easy distance comparisons with 2 miles to 1-inch enlargements of complex areas. All extant rail lines are shown together with stations, junctions, yards, principal bridges and tunnels. Former lines, now abandoned, are also shown as well as ownership, current and past, and trackage rights. An index of stations is included. The atlases are printed on quality art paper with softcover and stitch bound for ease of use at trackside, each volume provides an average of 80 maps. We currently have the following issues in our library: Appalachia and Piedmont, Arizona and New Mexico, California and Nevada, Colorado and Utah, Dakotas & Minnesota, Great Lakes East, Great Lakes West, Mountain Plains, New England & Maritime Canada, Northeast, Pacific Northwest, Prairies East and Ozarks, Prairies West, Southeast, Southern States, Texas, Western Canada. The club owns most but not all of available titles. The company continues to sell the publications – some updated.

As you know, all our library books have been donated. We still continue to accept book donations but

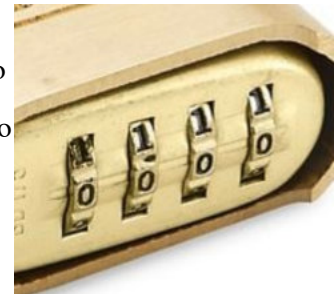
Director - Steve Milward



Greetings, A quick look at the thermometer only confirms what you already know – Summer is here! With temps near the triple digits, you might think that there's little going on at the railroad. On the contrary, a lot is happening. We'll have the 4th of July weekend runs, public run days, members run days and birthday parties, too. Of course, we'll have work days to compliment the never-ending maintenance and improvements to our railroad. All are encouraged to come on out and get involved.

Over the last couple of months, we've been happily surprised by the number of new members, and by those rejoining our group. To all, we say "Welcome aboard!". If you come out and feel a bit overwhelmed or unsure as to what to do, seek out another member and let them know that you're new.

An important reminder – If you unlock a gate or area protected by a combination padlock, be sure to **Zero "0000" the lock**. Also, take a moment to check any open locks to make sure they've been set to Zero. Be sure they're set to Zero when you leave for the day. If the combo falls into the wrong hands, rest assured that less scrupulous folks won't hesitate to break in.



Until the next time we see you on the rails, stay cool and have fun!



it is a good idea to contact the librarian (me) at librarian@svlsm.org to check as we have many duplications of books.

I hope by the end of summer to be working on organizing our magazines. We have a lot of duplicate copies of some issues, especially Live Steam Magazine. Once I know what we have in duplicates, I will ask the board what they want to do. I know some members are looking for certain issues of Live Steam.





TRACK UPDATE

By Phil Huntingdale

With the warmer summer months we have those beautiful Tuesday mornings where we can get out and run our steam, battery, and electric locomotives with their consists. Steve Arigotti had his several locomotives out with beautiful coaches and freight cars, Gorge Blount had his Ruby, Earl Martin had his Garret, and Colton Snell was running his Roundhouse Millie and others. Dave and Bart from Sonora have been down several days with their steam and battery equipment. They both share their enthusiasm for the track and park setting. The table is definitely being used for its intended use by steam locomotives members. Butch Floyd has been out with his SP GP, and Michel Fitzgerald has been out running his LGB locomotive electrics. I have been lazy and run battery locomotives. Things are moving. Nancy Norris, past writer/contributor for Garden Railroads magazine came up to share in the table and ran one of her many locomotives as a guest. SVLSRM is definitely on the radar of G gauge railroad enthusiast. Thanks to all that help make this layout a place to share and enjoy the hobby.

Don't forget the first weekends of the each month are the public run events, hours 11:00 to 3:00. However, for July the park is doing fireworks and we won't be running until 6 PM. Come out and enjoy the fun! Several have found this weekend to be an excellent opportunity to run and a great way to encourage young folks to get into the hobby. Birthday parties are in full swing on Saturday and Sundays; check the calendar on the web site. If you can, bring a train to run or run the clubs electric. Really adds to the party experience. With the great early day weather, bring out your significant other and folding chairs and relax under the shade of the canopy trees.

One more, Allison Barry has had the Caboose Library open on Tuesday, and I encourage those out at the park to visit with Allison and let her show the clubs collection of books and periodicals.

See you about!

BY-LAW CHANGES

Our club By-Laws will be updated at our November 20th, Annual Meeting. For review, all regular and family members will receive a copy of the new By-Laws with changes in August, 2021. Voting to accept the changes will take place at the Annual Membership meeting scheduled for November 12th.

Specifically, the major changes involve our Membership Definitions. The new Membership Definitions are as follows for your review.

Eligibility requirements & privileges

Regular Membership (Individual)

1. Shall be at least 18 years of age
2. New members shall pay track fee, first year
3. Pay annual dues set by membership
4. Eligible to vote on all matters
5. Eligible to hold elected office position
6. All rights & privileges granted by Bylaws

Associate Membership (Individual)

1. Shall be at least 18 years of age
2. Shall live more than a 60 mile radius from the club
3. Pay annual dues set by membership
4. Exempt from track fee.
5. Not eligible to vote or hold elected office
6. All rights & privileges granted by Bylaws unless otherwise noted

Family Membership

1. (2) Regular memberships (2 adults, 18 and older) and all children and grandchildren 17 years of age and under living in the same household
2. New Family Memberships shall pay track fee
3. Pay annual dues set by membership
4. Eligible to hold elected office position
5. Both adult members shall be eligible to vote on all matters
6. All rights & privileges granted by Bylaws

Life Membership

1. Conferred by the Board of Directors
2. Exempt from annual membership dues
3. All rights & privileges of Regular Member

Honorary Member

1. Conferred by the Board of Directors
2. Exempt from annual membership dues & track fees
3. Length of Membership, 1 Year
4. Not eligible to vote or hold elected office

Secretary Board Report

By Stephanie Huntingdale

The Board meets by ZOOM. Members are always encouraged to attend. The next meeting is July 12, 6:30 p.m. If you would like to attend, contact Andy Berchielli, (916) 752-6697, for how to connect to ZOOM or Stephanie Huntingdale (916) 580-7377 for an Agenda. Public Run on June 4 & 5. 550 attended.

Board discussed cost of replacing aluminum rail with steel rail. Motion made to authorize up to \$6,300 to purchase steel rail for future track projects.

Still working on irrigation problems caused by park well problem.

Spring Meet – over 300 in attendance. It was suggested that maps could be improved with sidings numbered that included length of track.

Defining Membership – New Membership definitions are to be included in By-Law revisions and printed in newsletter. Proposed dues structure for 2022, Regular Membership \$75, Associate Membership \$45 and Family Membership \$100.

Library – books are still being recorded. Members are able to check them out.

Legacy Plan – Board moving ahead to establish succession documents and put into Safe Deposit Box.

Fourth of July – Park will not open till 6 PM. Event for club: Bring your own meat to BBQ and a side dish to share. Arrive at 4 PM. Parking passes for Ambassador are available in the Caboose.



SAFETY RULES FOR THE MONTH

1.03 Passengers and Visitors

General public, when permitted within the steaming bays, shall be escorted by a SVLSRM member. General public

who need to get close to tracks for photography shall have an escort to keep a lookout for oncoming trains or equipment movement.

2.14 Inspection Standards

During annual boiler testing, a boiler shall meet the allowable leak limits at a minimum of 150 percent the maximum boiler operating pressure. Boilers shall not exhibit any bulging or displacement of sheets, firebox, barrel, or pressure surfaces and shall not produce unusual sounds or sudden drops in pressure during pressure build-up or at maximum test pressure. All new boilers, or boilers having undergone any repair, modification or alteration to any portion of the pressure vessel including but not limited to: shell, stays, tubes, tube sheets, crown sheets, or dome, shall be subject to re-testing. Engineers shall produce evidence of inspection upon request.

3.06 Direction of Movement

Shall be determined by the Trainmaster. From 'Passenger station' Eastbound towards the box car, or Westbound towards Hagan Park.



10 Years ago: Matt Mason gave final report on the Meet. We had 57 engines of which 6 were 1” scale. Raffle went well, Dinner went well, Reverse running after a couple of problems went well. Several improvements are needed: 1. Water in lower yard; 2. New throws for park area to help with reverse running.

The Alco RS3 engine is not available for service due to thin wheel flanges on the power trucks (19 years old).

We have investigated the alternatives: new locomotive, new trucks, repair existing trucks and the Board of Directors has decided to repair the existing trucks.

The track crew will be working on Midway North Yard. We will be building one more switch, Two switch throws, and completing the rest of the sidings.

20 Years ago: General Membership Meeting: • The RS3 will be back at the track Sunday after getting new trucks. Don will run it and check it out Sunday. • Orange and green straddle cars are running, yellow are still out of service. Watch for leaning passengers.

• Don and Ed Yungling are working on a depressed center prototype for passenger running. • Board is considering a budget for steel rail. • People need to get trained on the mower. • Membership approved looking into putting the grounds on an automatic watering system.

30 Years ago: Because SVLS is located in a popular public park, work gangs always attract attention. Usually, before the first tie is dug out, visitors gather and the questions come hot and heavy. Here are some of the most frequently asked questions (along with favorite responses): 1. Do you ever sing “I’ve Been Working on the Railroad”? NO, why should we. Everyone else subjects us to their out burst of song. The record, to date is 12 second after the work train stopped moving. 2. Are these trains real? They are authentic scale replicas. 3. Are the trains electric? Usually no, but we do have some that are powered with 12 volt batteries. 4. Why are there 3 rails? We offer two gages, 4 3/4” and 7 1/2”. 5. When do the trains run? Here is a schedule of our run days. 6. Do you charge? We gladly accept donations to help maintain our railroad.

There you have it, a small sample of railroad public relations. Seriously, the time spent teaching young and old alike about railroading is one of the finer aspects of the hobby. We model in miniature scale but people’s enjoyment with our hobby is definitely full-size. Enjoy - Keith Berry, Superintendent

40 Years ago: For the third time in as many months vandals have torn up the 100 feet of track approaching Riverbend. The last time it happened it was relaid by Warren Rose and John Livesay, who worked at it for about eight hours during the height of our heat wave the last weekend in June. It must be very discouraging to a dedicated vandal to see his best effort so consistently and promptly put back into operating condition.

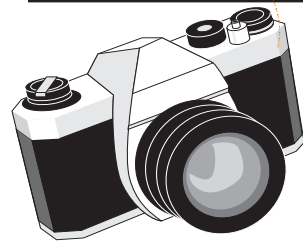
FOR SALE



The RGS Story (Rio Grande Southern) Complete set Vols I-XII \$1500.
 Full Size Crossing lights & bracket (2 light) \$275.
 Full Size single Crossing light \$100.
 Full size Adlake Switch Stand light \$175.
 Full size Adlake switch light has only one lens \$100.
 Adlake Lantern , one lens missing \$350.
 Turntable for Model - dual track 7.25 & 7.5 gauge \$150.
 Various Boxcar/Caboose grab irons - Make offer

Contact Jeri Juergenson at 530 269-0443 (leave a message)

We had some members of the Houston Area Live Steamers that where visiting friends in our area and also visited us last weekend.



Got a project you would like to show off that is too big to bring to the meeting for show and tell. Then give the editor a call/email and we'll take pictures for a feature.

Got Something for Sale? Send to editor@svlsm.org

Chris Donhost and his wife Evelyn are still the proud parents of Elijah and Paul. They were born Tuesday, June 24th 2008



Then 2008



Now! 2021