

The GOLDEN SPIKE



www.svlsrcm.org

October 2021

Volume 48, Issue 10



President's Report

By Andy Berchielli

We welcome Larry Curtin as new safety chairperson. He has expressed an interest in keeping the facility safe and will make recommendations on any improvements that will make things safer around the grounds.

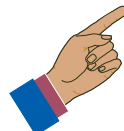
We also congratulate Dennis Gramith as new life member. Dennis is an ambassador for the club; attends almost every event and treats people with kindness and stories to whoever he meets. Thank you for the years of dedication to the club.

The pumpkin train is back! Runs the first weekend from 11-3pm. Families ride the train down to Oasis. Then pick out a pumpkin; have several photo ops available; a bounce house while they wait and the G gauge track will be open for young ones to run an electric train around. Train ride \$4. Small pumpkin \$3. Larger pumpkin \$6. All hand on deck makes for a smooth operating event. This is becoming a good fundraiser for the club. So please pitch in some time for the benefit of the club

Then the third weekend is our Fall Meet. Visit our web at www.svlsrcm.org to register for the meet and reserve train space, RV space and meals. Meals available will be Friday and Saturday lunch and dinner. Then Sunday lunch. Coffee and donuts will be available in the mornings. Setup for meet will be Thursday.

The fourth weekend is the Portola Valley Meet. I have had several people reach out to me about attending. They are planning a dinner on Saturday and bbq lunch. Must RSVP with me. Sunday you provide your own meals. Their new expanded track should be functional for us to ride. Reach out to me if you want to go.

A new unloading lift has been installed at the club. Many thanks to Reno Farinelli for leading the fabrication of the transfer/turntable lift. From there I had many help getting in place and set. The move from concrete pad to lift location was quite interesting. We rigged the lift with ropes and straps and put it on wheels. It actually went pretty smooth. Thanks to Steve, Craig, Dennis, Peter, Richard for helping me getting it in position. From there Craig helped set the anchors and level it and Jim Welch ran power to it. Many thanks to all involved from picking up, to building, to setting it in place and painting. Many hands make jobs like this a little more manageable.



Do you want to see the Sacramento Valley Live Steamers stay on track? Elections are upon us and it is up to each of us to do our part for the betterment of our organization. President, Trainmaster, and Director-at-Large positions are available. Andy, Peter, and Steve have been wonderful stewards of the club for us all to enjoy. That is great news for those who are next! You can thank them by continuing the good work through service on the board. There is an opportunity to bring your ideas and leadership to our organization. This is the time to make yourself available - we need you. Chris Donhost is heading up the nomination committee.

Please call for more information about how you can help your club continue down the line. (707) 301-0739.

SVLSRM Calendar

Club future activity will depend on VIRUS GUIDELINES. *Please check on-line about Public activity.*

- Oct. 2 11 AM to 3 PM - Harvest Express Rides
- Oct. 3 11 AM to 3 PM - Harvest Express Rides
- Oct. 11 Board Meeting at 6:30 PM Via Zoom
- Oct.15 Fall Meet
- Oct.16 Fall Meet
- Oct.17 Fall Meet
- Oct. 23 & 24 Portola Valley & Alpine RR joint meet with GGLS - Contact President Andy.

- Nov. 8 Board Meeting at 6:30 PM Via Zoom
- Nov. 20 Work day.& Annual General Membership meeting and Elections.
- Nov. 21 Member RUN day.

Please volunteer to support the club events.
How will you support SVLSRM this month?



Help save money by receiving your newsletters on-line.

Save SVLSRM some money and read the news letters on-line. Tell Membership that you don't need the mailed copy; we will notify you by E-mail so you can read it on-line.

The Sacramento Valley Live Steamers Railroad Museum, Inc. is organized and operated exclusively for public benefit charitable purposes within the meaning of Section 501 (C.) (3) of the Internal Revenue Code.

Donors may deduct contributions to The Sacramento Valley Live Steamers Railroad Museum, Inc. to the fullest extent allowed by law as provided in Section 170 of the Internal Revenue Code.

The Golden Spike is published monthly by the Sacramento Valley Live Steamers Railroad Museum, Inc., P.O. Box 273, Rancho Cordova, CA 95741. The SVLSRM track is located in Hagan Community Park, Chase Drive, Rancho Cordova, CA.

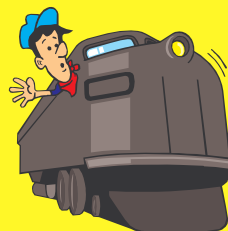
Articles & Pictures may be submitted to:
editor@svlsrm.org.

**The news letter deadline is 24th of each month.
Member articles wanted.**

MEMBERSHIP

by Stacy Reese

**WELCOME,
NEW
MEMBERS!**



Warren Peterson

Board of Directors

- (##) *Ending year of term*
- President: Andy Berchielli (916) 752-6697 (21)
E-mail: president@svlsrm.org
 - Vice President: Dennis Gramith (916) 988-7884 (22)
E-mail: vicepresident@svlsrm.org
 - Secretary: Stephanie Huntingdale (916) 580-7377 (21)
E-mail: secretary@svlsrm.org
 - Treasurer: Tom Nance, (714) 795-4630 (22)
E-mail: treasurer@svlsrm.org
 - Track Superintendent: Dennis Bowie (916) 337-9492 (22)
E-mail: tracksuper@svlsrm.org
 - Yardmaster: Richard Lutrel (925) 876-0375 (22)
E-mail: yardmaster@svlsrm.org
 - Trainmaster: Peter Welch (916) 838 4998 (21)
E-mail: trainmaster@svlsrm.org
 - Director1: Craig Griffin (916) 365-1917 (22)
E-mail: director_craig@svlsrm.org
 - Director2: Steve Milward (530) 559-2472 (21)
E-mail: director_steve@svlsrm.org

Committee Chairpersons

- Membership Chairperson: Stacy Reese (916) 960-6850
E-mail: membership@svlsrm.org
- Librarian Chairperson: Alison Berry (916) 956-4597
E-mail: librarian@svlsrm.org
- Caboose Chairperson: Barbara Moser (916) 645-3425
E-mail: caboose@svlsrm.org
- Birthday & Company Events Chairperson:
Phone: (916) 572-7857 E-mail: Events@svlsrm.org
- Safety Chairperson: Larry Curtin (279) 900-5367
E-mail: safety@svlsrm.org
- Newsletter & Web Editor: Bill Yoder (916) 652-7113
E-mail: editor@svlsrm.org

Reminder - No phone calls after 8:59 PM



Oct. 15-17. Bring your engine and enjoy three days of running. As done at previous meets, please bring your train cone (number & name) for your reserved siding to park your train during the meet. RV and Tent camping spots available on first-come basis but you should now request your steaming bay, train parking spur, RV spot, and Dinner reservation on-line. Also buy your meals or meal tickets on-line through PayPal.

For info & reservations go to: www.svlsrcm.org
Meet info will be on the home page.

The Caboose meals and prices:
ALL DRINKS \$1.

Breakfast: Friday Saturday and Sunday - Donuts and coffees for donations. 8am

Noon to 1pm Friday: Sack Lunch \$6 Turkey or ham sandwich, chips and cookies.

Friday dinner at 6pm - \$10 Under 13 \$5
Spaghetti, Cesar salad, veggies, garlic bread and drink.

Saturday and Sunday Lunch. 12-2pm \$10 Under 13 \$5
Burgers or hotdog, potato salad, chili or bake beans, chips and drink.

Saturday dinner 6pm \$15 a person
Steak, salad, beans, garlic bread, dessert and drink.

Meal ticket \$45 adult, \$30 for Kid under 13, includes Friday lunch and dinner; Saturday lunch and dinner; Sunday lunch. *Drinks only included with Dinner and Sat. & Sun. Lunch.*

Saturday dinner must be purchased or RSVP'd by Oct. 10th, Monday, of Meet Week.

As always we will need help on Thursday for setup of tables & canopies, then during the meet, food service, bathroom cleaning, trash pickup, & then clean up and put everything away. Please let us know how you will help.

Meet Registration Hours: Friday & Saturday 9 am - 4 pm, Sunday - 9 am -12 Noon.

All members & guests attending the meet need to stop to check- in at registration.

Thanks! And it will be great to see you at the meet!



TRACK UPDATE

By Phil Huntingdale

Again this last month the G gauge railroaders were out having great runs. The days have become more pleasant, free of smoke, and the mornings were generally clear, and cool.

This month the club will be having the Fall Meet, October 15th thru 17th. You will need to pre-register and you can do this on the website. Check that you will be operating G Gauge equipment. As you'll see in this newsletter you will be able to sign up for your meals too. You must reserve your meals so that we know how much to prepare. On Friday after dinner there will be a General Membership meeting. Plan to attend and learn what's happening. You won't want to miss this; it's a great opportunity for all to get acquainted with SVLSRM members and guests.

If you have an interest in steam, electric, or battery locomotives, come out and run. For those sticking around in the evenings, the G Gauge layout will have light strands glowing for evening runs. Should be a great club weekend meet.

Reminder, during meet's, you are not permitted to park inside the fenced area. You may drive in, off load and load out, but your vehicles must be parked outside the fenced area. This is because there are many people in attendance; RV's and tents within the park. Meet weekends we must adhere to the Board's request.

We will be able to park our smaller equipment on the sidings on the G layout, however, please consider others should they be wishing to stage their equipment also on the various sidings.

Two events coming up, The Pumpkin Patch Train the first weekend in October. The Santa Train coming up the first two weekends in December. Please try to support these two events as they are our biggest fundraisers.

See you about!



Please stay safe and follow State & County guidelines to do your part in preventing the spread of the Covid-19 virus.



10 Years ago: Capitol City Air Show
 With so much success at the Travis Air Show, we were invited to the Capitol City Air Show at Mather. It turned out to be a good fundraiser. Since it was a last minute decision to go, many thanks to those that help. We had Augie, Richard, Pete, Lee, Tom, Dale, Mark, Carson, Tim, Lois, Mary, Karle, Ed and myself.

Thanks for coming together and making this work. We had a blast! - Andy Berchielli



20 Years ago: The new trees just west of the steaming bays are getting big. Two others near the passenger station have suffered from gophers. Gordon wrapped "antichewing" tape around the lower trunks as a remedy and it seems to be working. The trees look somewhat stressed but are attempting a comeback. We have some spare trees on hand in case these don't make it. Tree limb trimming has continued so that people attending the Fall Meet won't get hit in the face.

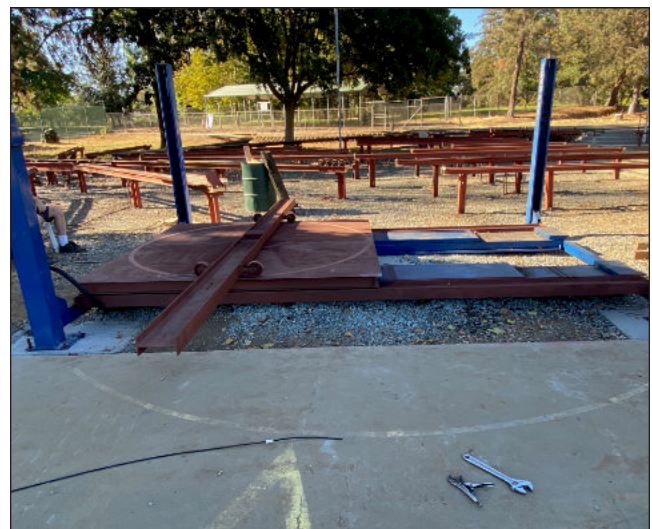
Don't forget that there will be a Point to Point run on Friday the 19th at 4pm. As of right now there is space for 3 more trains to be involved. Also of note, the track will be open to anyone with a radio. This way you can be in contact with the dispatcher at all times and avoid any accidents.

30 Years ago: Rail to be delivered..... Oct 16th lots of help will be needed to handle the rail when it is delivered. be expecting a phone call from the board to see if you can help.

40 Years ago: Old-Time Railroad Movies at Big Top Pizza last month netted the club \$265. Not bad at all. Note: SVLS Fall Meet 17-18 Oct. has been cancelled by the board.

Roseville's annual railfair. Exhibits will include a 20ft by 20ft space occupied by engines of SVLS members Ed Spall, Warren Wagner, Dick Quiring and Alan Shelley. The Cab Forward will be there too, but in another place.

New lift being installed. It will allow for easy alignment with the track in train trailers. Can move the lift and just back the trailer straight back.





Librarian - Alison Berry

The SVLSRM library currently has almost 600 books. There are 22 books written by Lucias Beebe and his partner Charles Clegg in our library – 14 unique titles.

Lucius Beebe was an interesting person – born to a wealthy Boston family in 1902, he graduated from Harvard and began a career in journalism. He worked for many of the major newspapers and magazines of the time. In 1950, Beebe and his long-time romantic partner, photographer Charles Clegg, moved to Virginia City, Nevada, where they purchased and restored the Piper family home and later purchased the dormant Territorial Enterprise newspaper. The newspaper was relaunched in 1952, and by 1954 had achieved the highest circulation in the West for a weekly newspaper. Beebe and Clegg co-wrote the That Was the West series of historical essays for the newspaper. In 1960, Beebe began work with the San Francisco Chronicle, where he wrote a syndicated column, This Wild West. During the six years that he wrote the column, Beebe covered such topics as economics, politics, journalism, religion, history, morals, justice, finance, and travel.

Beebe wrote extensively about the joys of train travel, including such nostalgic books describing quaint short line railroads as *Mixed Train Daily* (1947) and *Narrow Gauge in the Rockies* (1958). In September, 1947, he arranged an excursion on the Maryland and Pennsylvania Railroad covered by a photo spread in *Life*. Beebe and Clegg were attired in formal wear and top hats, as waiters served champagne and caviar to their guests riding in an open car behind an ancient steam locomotive.

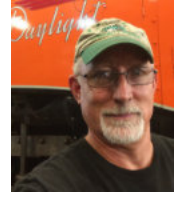
Beebe's book *The Trains We Rode* (1965) used more than 1,500 photos and illustrations to chronicle the passing era of famous named passenger trains and streamliners, along with the stations they served. For example, he proclaimed Baltimore's Mount Royal Station, built in the early 1890s, as "one of the celebrated railroad stations of the world, ranking in renown with Euston Station, London, scene of so many of Sherlock Holmes' departures, the Gare du Nord in Paris, and the feudal fortress of the Pennsylvania Railroad at Broad Street, Philadelphia." Along with Clegg, Beebe owned two private railcars, the *Gold Coast* and the *Virginia City*. The *Gold Coast*, Georgia Northern / Central of Georgia No. 100, was built in 1905 and is now at the California State Railroad Museum.

After Beebe and Clegg purchased The Virginia City, they had it refurbished and redecorated by famed Hollywood set designer Robert T. Hanley in a style known as Venetian Renaissance Baroque. The Virginia City has been restored and currently operates as an excursion car. Beebe and Clegg wrote about and photographed the Virginia & Truckee Railroad and worked unsuccessfully with other railroad fans to preserve it.

Clegg and Beebe sold the Territorial Enterprise in 1961 and purchased a home in suburban San Francisco. They contin-

Director - Steve Milward

Greetings,
You certainly don't need a calendar to tell you that Summer is over! After months of heat, fires and smoke, the cooler days and nights of Fall are a welcome change.



Of course, in and amongst all of those long hot days, work continued at the railroad. Along with the never-ending maintenance, upkeep and improvements of and to our facility, there's been a new addition. Our ever troublesome turntable near the transfer tracks is a now thing of the past! A four post automotive hoist was purchased, relocated, and heavily modified to meet our needs. Once the old turntable was removed, our new lift was moved to and installed in its new location. It should be fully functional by the Fall Meet, if not sooner. Many thanks to the tireless efforts of Andy B., Reno F., Richard L., Peter W. and others for making this happen!

With the arrival of Fall, our organization really begins to shift into high gear. Lots of activities in the not too distant future that will benefit from lots of help from the membership. First up are the Pumpkin Trains in early October. Following that is our Fall meet. Looking to November, we bring the portable track to the Christmas tree lighting in Rancho Cordova. Anytime, or anywhere you can lend a hand will be most appreciated.

So, come out, join in and be a part of the fun!



ued the writing, photography, and travel that had marked their lives until Beebe's death. Beebe died at the age of 63 of a sudden heart attack at his winter home in Hillsborough, California, (near San Francisco) on Friday, February 4, 1966. I hope you will check out the Lucius Beebe books we have in our library.



Saturday's, , 8/28/2021, 9/11/2021, 9/18/2021: Dennis Bowie, Tom Nance, Larry Curtin, Tom Reese, Stacy Reese, Peter & Jim Welch, Craig Griffin, Barbara & Gordon Moser, Chris Klevasahl, Dennis Gramith, Bob Ress.

October Public Run Days, 9/4/2021

- 9-5-2021: Train Crew , Chris Donhost, & sons Paul, Eli Donhost, Leonard Cassier, Robert Forren, Todd Bishop, Rick Oswood, Craig Griffin, Gordon Moser, Barbara Moser, Chris Klevasahl , Phil Huntingdale, Stephanie Huntingdale, Dennis Bowie, Colton Snell, Rich Corbell, Richard Lutrel, & family Amy, Sarah, Breanne, Dean Sheets, Harry Voss, Dennis Gramith, Steve Milward, Jim & Alice Welch, Tom Nance, Rob Sharratt, Andy Berchielli, Don Yungling & family, Andrew Maret, Richard Corbell, Tom & Stacy Reese.

G-Scale , 9/4/2021, 9/5/2021: Run Days, Richard Van Slyke, Bill Bivings, Yossarian, Bob Bess, Bill & Butch Floyd, Bart Cook.

Tuesdays, 8/24/2021, 8/31/2021

9/7/2021, 9/14/2021, 9/21/2021: Larry Curtin, Gordon & Barbara Moser, Phil & Stephanie Huntingdale, Dennis Gramith, Keith Berry, Richard Corbell, Bill & Butch Floyd , Colton Snell, Sidney Madden, Chris Kelvasahl, Leonard Cassier , Glen Wilson , Steve Arigotti, Rose & David Jansson , Chuck San Fillippo, Bart Cook , Dave Frediani , Dave Farinelli, Harry Voss, Bll Bivings.

Miscellaneous Days, 9/2/2021, 9/6/2021, , 9/8/2021, 9/12/2021,, 9/19/2021: worked on lift - Andy Berchielli, Craig Griffin, Rob Sharratt, Phil Huntingdale, Dennis Bowie, Harry Voss, Richard Lutrel, Reno Farinelli, Tom & Stacy Reese, Dennis Gramith, Jim & Peter Welch, Tom Nance, Steve Milward.



There are plenty of projects to work on at the railroad so you need to come out and give time to your organization.

Secretary Board Report

By Stephanie Huntingdale

The Board meets by ZOOM. Members are always encouraged to attend. The next meeting is September 13, 6:30 p.m. If you would like to attend, contact Andy Berchielli, (916) 752-6697, for how to connect to ZOOM or Stephanie Huntingdale (916) 580-7377 for an Agenda.

Public Run for August 405 riders.

Maintenance needed before Fall Meet: Inside Loop, some rail joints have settled, switch at Hillview needs to be looked at and better instructions for using the inside loop signals.

Little Blue has an intermediary injector that was put on by Peter Welch. Board purchased.

Pacific tender needs some tubing replaced. Craig Griffin is getting material.

Larry Curtin was appointed to the Safety Chairman position.

Pumpkin Patch – to be held on October 2 & 3. Alice Welch and Amy Lutrel will chair the event. Club will purchase 300 pumpkins, a Bounce House will be rented, and the park will be decorated. Tickets for train ride will be \$4, pumpkins will sell for \$3 and \$6. One family per ride car.

Fall Meet Planning – Board went over the Event guidelines. Set prices for meals, reserving Porta Potty, RV's will again be \$20 for the meet.

Andy Birchielli will be handling all reservations for the meet. Reservations will start on October 1st.

FCR 2020-03 Steaming Bay Lights – Tuesday crew will paint posts.

FCR-2018-27 – The plan for a storage building has been submitted to the park for approval.

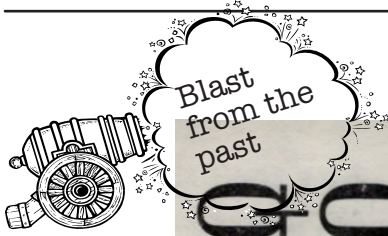
FCR-2021-01 – Lift Replacement – Lift was purchased for \$2,000. Reno Farinelli and Bruce Odelberg designed and built the transfer table. Lift is installed, 220 wiring to be done. It should be operational for Fall Meet. Estimated total cost is \$4,000.

FCR – 2020-96 Signal Crossings – Bells not working, signals need maintenance. Bill Yoder is to look at problems along with Dennis Bowie.

SVLSRM is now tracking our volunteer hours. If you have put in any hours helping maintain the club or on projects please sign in at the Caboose. Volunteer hours are very valuable to non-profits when applying for Grants. California rate for volunteer hours in 2021 is \$29.95 per hour. Our total hours for June were 181. This converted to a \$5,420.95 value. June was the beginning tracking month.

Proposals for a Memorial expansion were discussed and will be presented at the Fall General meeting.

Dennis Gramith has been elected to Life Time membership. SVLSRM will participate in the Rancho Cordova Christmas Tree Lighting – November 28th. Help will be needed for set-up and take down.



The
GOLDEN SPIKE

VOLUME 1 SEPTEMBER 1974 NUMBER 3

**SACRAMENTO VALLEY
 LIVE STEAMERS**

FALL MEET

September 28th and 29th will be the dates for the Sacramento Live Steamers Fall Meet. Be sure to set aside this weekend for a time of steaming, displaying, fellowship and an all around good time. Bring yourselves, your families, your friends, your refreshments and your locomotives. Don't miss out...see you there.

Lots of clean up, maintenance and weed removal is needed before the upcoming Meet. Some are putting forth a valiant effort in this important project. The list of workers includes: Larry Badger, Don Sprenger, Pat Connors, Ed Yungling, Dick Esselbach, Barry Garland, Earl McKenzie, Ken Spicer, Earl Swart and Don Yungling. Our New track foreman is Don Sprenger. Let's all join in and help him keep our railroad in good shape. (Don's official title is Chairman of the Track Committee).

One of Don's recent projects has been the construction of our new weed killer car. It has a tank and motorized pump and was designed to keep the right of way clear of those unwanted growths with a minimum of mess. The photos show it being used in the Cordova Jungle. August 18 was the first day it was used, and since no flatcar was available, the steaming bays were given a treatment.



Maintenance of Way -- and, boy, did it weigh!

FOR SALE



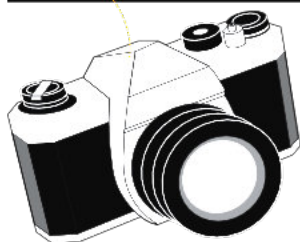
The RGS Story (Rio Grande Southern) Complete set Vols I-XII \$1500.
 Full Size Crossing lights & bracket (2 light) \$275.
 Full Size single Crossing light \$100.
 Full size Adlake Switch Stand light \$175.
 Full size Adlake switch light has only one lens \$100.
 Adlake Lantern , one lens missing \$350.
 Turntable for Model - dual track 7.25 & 7.5 gauge \$150.
 Various Boxcar/Caboose grab irons - Make offer

Contact Jeri Juergenson at 530 269-0443 (leave a message)

Got Something for Sale? Send to editor@svlsrm.org



See www.svlsrm.org for current information. If you have not looked for a while, then you will have missed news or for sale items that are not in the newsletter.



Got a project you would like to show off that is too big to bring to the meeting for show and tell. Then give the editor a call/email and we'll take pictures for a feature.



SAFETY RULES FOR THE MONTH

1.02 Speed Limit

No locomotive shall be operated at an excessive speed, and shall not be operated at a speed greater than that at which the locomotive and its train can be slowed and stopped within a reasonable distance, depending on the traffic, track conditions, visibility and weight of the train. Train speed shall not exceed 7 mph. Trains transporting the general public shall not exceed 5 mph. All engines must be run at reduced speeds in congested areas and in areas with close

2.05 Safety Chains

A chain, cable or draw bar must be installed between any car on which the Engineer is riding separate from his locomotive. A chain or draw bar must also be installed between any fuel car or cars and the locomotive which it supplies. Some safety device is recommended for all cars.

3.01 Responsibilities of the Engineer

The Engineer is responsible for the safe handling of the train and the cars at all times. They must be in close cooperation with all other operating personnel, observing all rules and signals (whistles, hand, flag or light) given by the conductor and stationmaster. They must run their engine in conformance with SVLSRM safety rules at all times. They must see that any SVLSRM equipment used by them is returned to its proper storage space at the end of their run, unless another engineer takes over the responsibility of such equipment and agrees to see that such equipment is properly stored after its use.

4.09 Brake Requirements - Large Trains

Any train consisting of more than 7 cars available for passengers shall have at least one half of the cars equipped with operable brakes, such brakes to be operated by the engineer from the locomotive.